

# HARD-S

GAS AND DUST FILTRATION

## ZASTOSOWANIE

- cleaning the air from dust-gas contamination, both dry-, and viscous dust

For filtration:

- aerosoles, emitted during spray painting of not large surfaces,
- air polluted with dust and gas contamination – emitted during rubber laser cutting and rubber grinding, processing of plywood, plexi, acrylic and other plastics,
- contamination of dust and gas, arising during polishing of various materials,
- oil-laden welding fume, along with accompanying gases emitted during the welding process,
- air polluted with particles of grease, at kitchen extraction hoods,
- noxious, unpleasant smells, in chemical laboratories,
- vapours emitted during upholstering activity – among others, cutting and gluing.

## FEATURES

- high-efficiency HEPA filter – class H13
- pocket filter – class F8
- net filter – class G3
- cassette with granulated activated carbon
- two pressure control sets
- silencer at the fan outlet
- hour meter – to measure the work time



## ADVANTAGES

- high filtration efficiency
- simultaneous cleaning of inconvenient dust, fumes and gas
- easy control of the pollution state of the filters, by means of signalling from the switchgear
- activated carbon – wide range of absorption of numerous chemical compounds

## TECHNICAL DATA

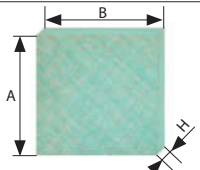
Type	Part No.	Maximum volume flow [m <sup>3</sup> /h] <sup>1</sup>	Maximum vacuum [Pa]	Supply voltage [V]	Motor rate [kW]	Acoustic pressure level [dB(A)] from distance:		Weight [kg]	Suctions connections <sup>2</sup>
						1 m	5 m		
HARD-1000-S	800O92	1250	1700	230	0,75	70	67	180	1xØ160 mm 2xØ125 mm
HARD-2000-S	800O88	2000	2000	230	1,5	73	66,5	237	1xØ200 mm 2xØ160 mm 2x250x152 mm

1. Volume flow has been specified at clean filters.

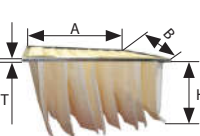
2. Assortment of ERGO LUX extraction arms is represented in separate catalogue cards.

## REPLACEABLE FILTERS

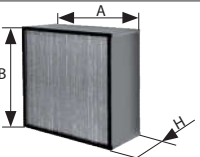
### PRE-FILTER PAINT-STOP

	Type	Part No.	Weight [kg]	Dimensions AxBxH [mm]	Quantity of filters	Class	Filtration material	Application
	PS-HARD-2000-S	838F76	0,5	700x740x50	1	G3	non-woven of glass fibre with progressively increasing density	HARD-1000-S HARD-2000-S


### POCKET FILTER

	Type	Part No.	Weight [kg]	Dimensions AxBxHxT [mm]	Quantity of filters	Class	Filtration material	Application
	FK-HARD-2000-S	838F86	2,3	610x610x360x20	1	F8	polyester non-woven of progressive construction filtration efficiency: 90%	HARD-1000-S HARD-2000-S

### HIGH-EFFICIENCY HEPA FILTER

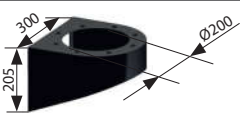
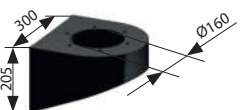
	Type	Part No.	Weight [kg]	Dimensions AxBxH [mm]	Quantity of filters	Class	Filtration material	Application
	FW-HARD-1000-S	838F87	5,4	610x610x80	1	H13	non-hygroscopic cardboard of glass fibre filtration efficiency: 99,95%	HARD-1000-S
FW-HARD-2000-S	838F83	18,8	610x610x292	1	H13	HARD-2000-S		

### GRANULATED ACTIVATED CARBON

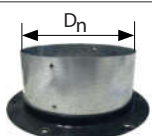
	Type	Part No.	Total weight [kg]	Quantity of cassettes	Remarks	Application
	ORGANOSORB 10CO 4x8	874W04	20	1	activated carbon should be replaced according to the indication of the hour-meter	HARD-1000-S
20			2	HARD-2000-S		

## ADDITIONAL EQUIPMENT

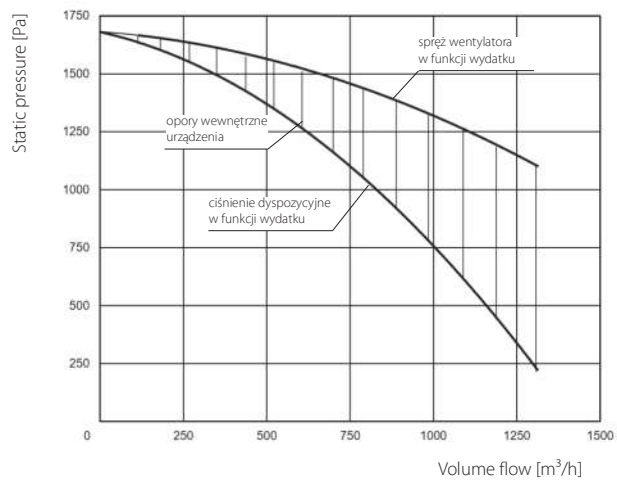
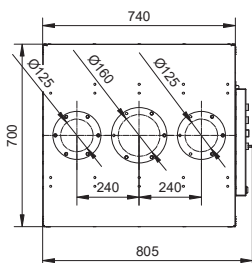
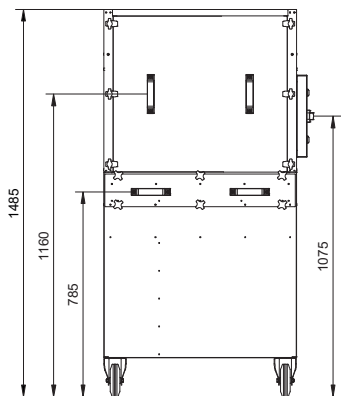
### BRACKETS TO INSTALL THE ERGO LUX ARMS

Sort of the bracket	Type	Part No.	Weight [kg]	Cooperating with arms	Application
	DB-ERGO-D	817W29	4	ERGO LUX-D	HARD-2000-S
	DB-ERGO-L	817W28	4,2	ERGO LUX-L	HARD-2000-S

### CONNECTIONS FOR FASTENING THE DISCHARGE DUCTWORKS

	Type	Part No.	Dn [mm]	Application
	DC-125	830Z13	125	HARD-1000-S
	DC-160	830Z14	160	HARD-1000-S, HARD-2000-S
	DC-200	830Z15	200	HARD-2000-S

HARD-1000-S



HARD-2000-S

